

BOX MINI

07-Apr.-2017

1.0

PAR16 max. 15W | GU10 | 100-240VAC | 50-60Hz
 CE IP20 0.9m

| | |
|-------------------|----------|
| white texture | 300120W0 |
| aluminium brushed | 300120L0 |
| copper | 300120P0 |
| black texture | 300120B0 |

OPTIONAL
for PAR16 lamps see our catalogue

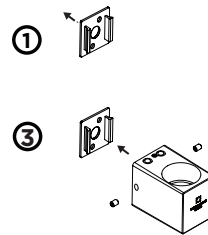
2.0

2xPAR16 max. 15W | GU10 | 100-240VAC | 50-60Hz
 CE IP20 0.9m

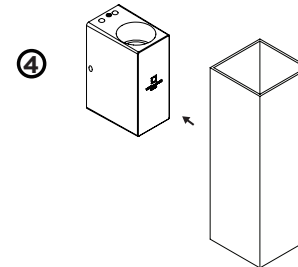
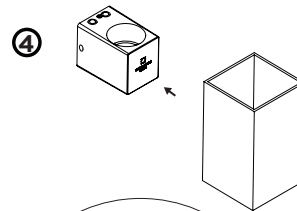
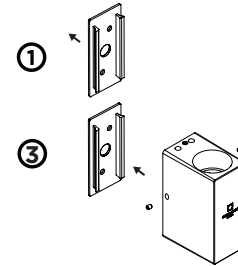
| | |
|-------------------|----------|
| white texture | 301120W0 |
| aluminium brushed | 301120L0 |
| copper | 301120P0 |
| black texture | 301120B0 |

OPTIONAL
for PAR16 lamps see our catalogue

BOX MINI 1.0

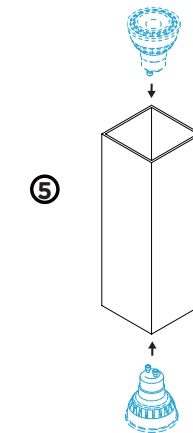
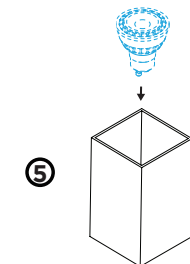
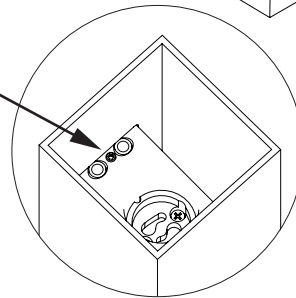


BOX MINI 2.0



FOR OPTIONAL LOCKING:

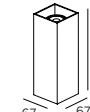
* Lock the cover by unscrewing the grub screw app. 3mm. Then the cover is stable.



DIMENSIONS



BOX MINI 1.0



BOX MINI 2.0

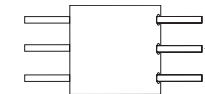
MOUNTING INSTRUCTION

- 1 Mount the base plate on the wall

POWER CONNECTION

- 2 Connect the power supply.

Interior: STANDARD version



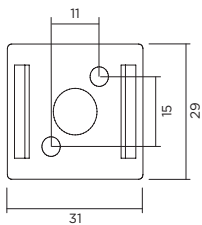
- 3 Mount inset on the back plate with side screws

- 4 Click cover over the inset

* For optional locking, unscrew the grub screw app. 3mm. The cover is now stable.

- 5 Mount the bulb.

BOX MINI 1.0



BOX MINI 2.0

